

CITY OF CAPE TOWN  
ISIXEKO SASEKAPA  
STAD KAAPSTAD

COASTAL MANAGEMENT  
SIMONS TOWN CIVIC ASSOCIATION (STCA),

Gregg.Oelofse@capetown.gov.za – 083 940 8143

Making progress possible. **Together.**

# Marine and Coastal Wildlife



# Simons Town African Penguin Colony



- The **STPC** stretches approximately **2.31KM** along the coast from IMT in the North to Frank's Bay in the South.
- This area includes **8 different sites**, one within SANDF property, five sites in City of Cape Town property and two sites inside SANParks property.
- The area found adjacent to the coast falls within the Table Mountain National Park **Marine Protected Area (MPA)** and **Boulders restricted zone**
- Together, the CoCT and SANParks Rangers cover all these sites with the assistance from the Quemic Rangers.







# Bees: A current challenge

- For humans a fatal dose is around 20 stings per kg (approx. 1500 stings for an adult)
- Penguins – two stings can kill
- In 2021 we lost 65 birds to bees in one day
- 2025 to date – 14 birds have been lost to bees



# WHALES

---















# RABIES IN SEALS

---

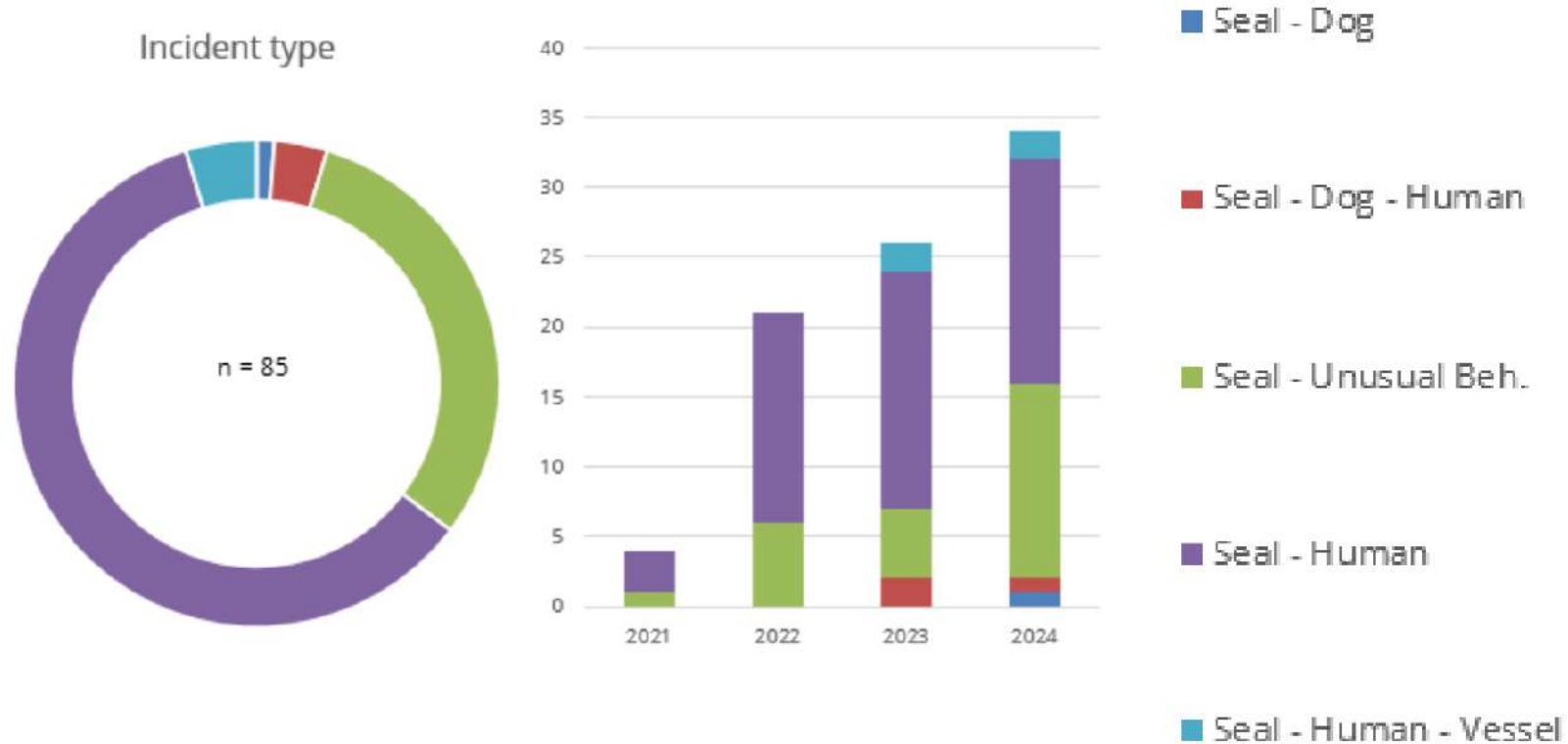


# Increase in unprovoked attacks on people

- We began tracking an increase in unprovoked attacks on recreational users from September 2021



- We have recorded 128 incidences
- 71 injuries from scratches to severe (ICU)



Late 2021 – started getting reports of aggressive seals



2022 significant increase in unprovoked attacks by seals on people, water users and beach goers



2022 Sea Search started taking samples and investigating cause



2023 Continued surge in unprovoked seal attacks



Early 2024 – four specific cases made us decide test for rabies – 3 Positive



### **Game Changed**



Retrospective sampling showed earliest on record was the July 2022 Kommetjie seal we had euthanised



July 2024 EXPERT WORKSHOP



Working Case Definition



Rabies in Seals Response Plan



Collaboration across multiple agencies, NGO's and researchers

**84 and counting**

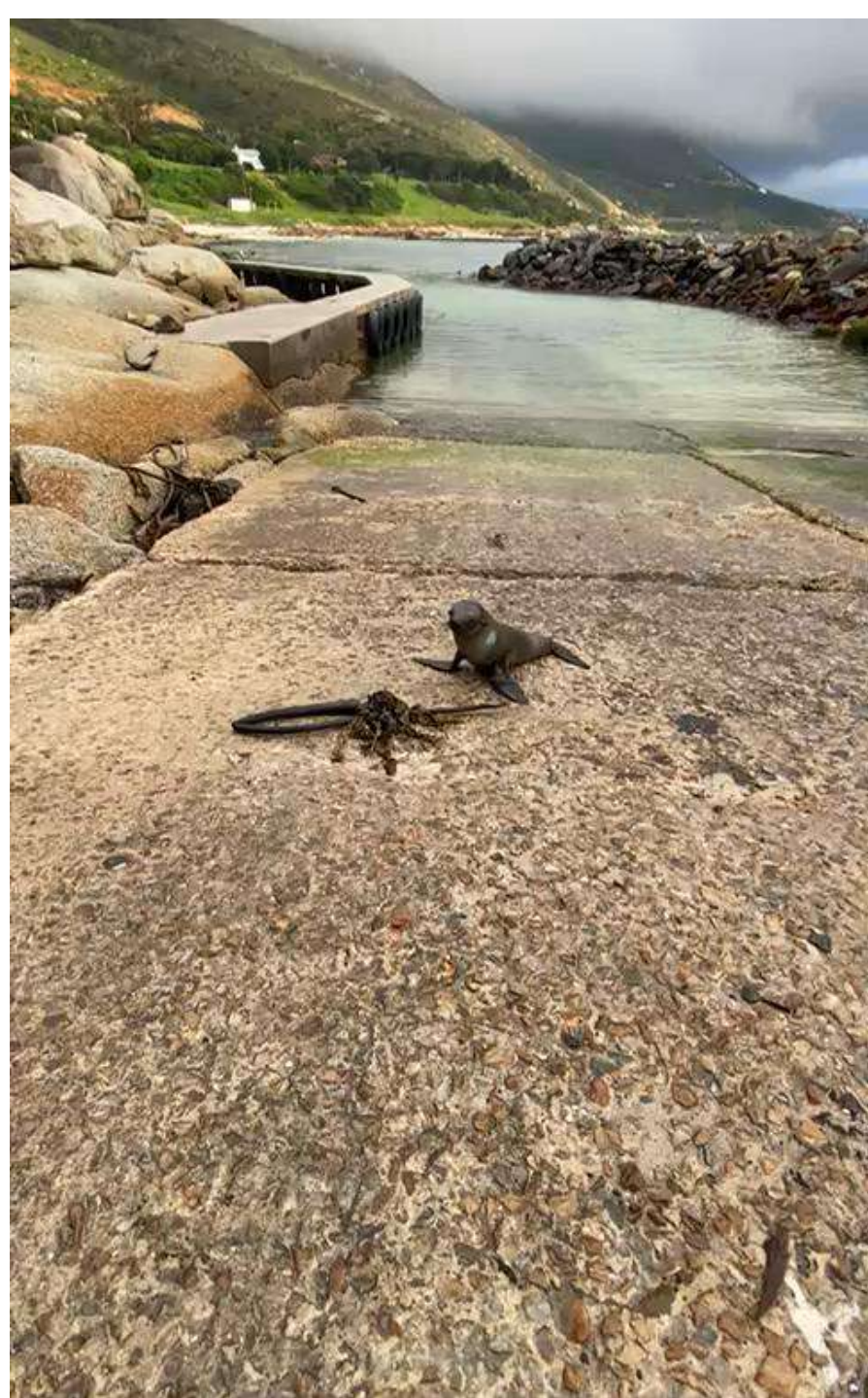
# Response Plan

---

- **Human Health Risk Management**
  - Health and vaccine advisories
  - Beach closures
  - PEP and follow up
- **Rapid removal of animals that meet the case definition**
- **Testing and Record keeping**
- **Seal Colony surveillance**
- **Cape Fur Seal Vaccination Programme**
- **(Try) Prevent transfer to other species**









CITY OF CAPE TOWN  
ISIXEKO SASEKAPA  
STAD KAAPSTAD















# Regulations and Enforcement

---



CITY OF CAPE TOWN  
ISIXEKO SASEKAPA  
STAD KAAPSTAD







moment, I did not intent to get close to the whale and advise everybody to keep distant and follow the laws of marine life 🙏🙏”

Just casual kitesurfing in South Afrika. What a beauty!

@duotone.kiteboarding @redbullned  
@youngcapital\_nl @ion\_international  
@gopro #truekiteboarding  
#geeftjevleugels #givesyouwings  
#duotonekiteboarding #duotonesports  
#kitesurfing #kiteboarding  
#extremesports #whale #hermanus  
#whalespotting



euphoria\_perpetua 25w



1,410,042 likes

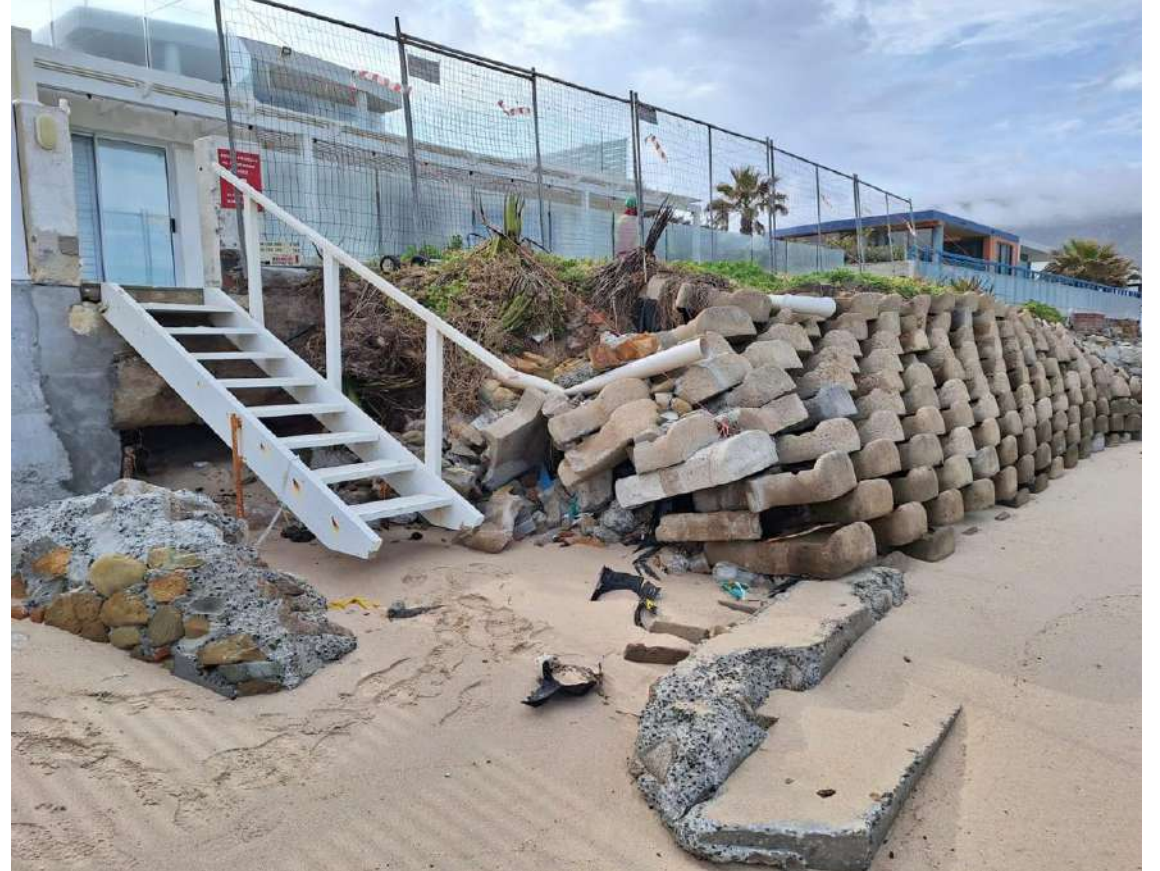
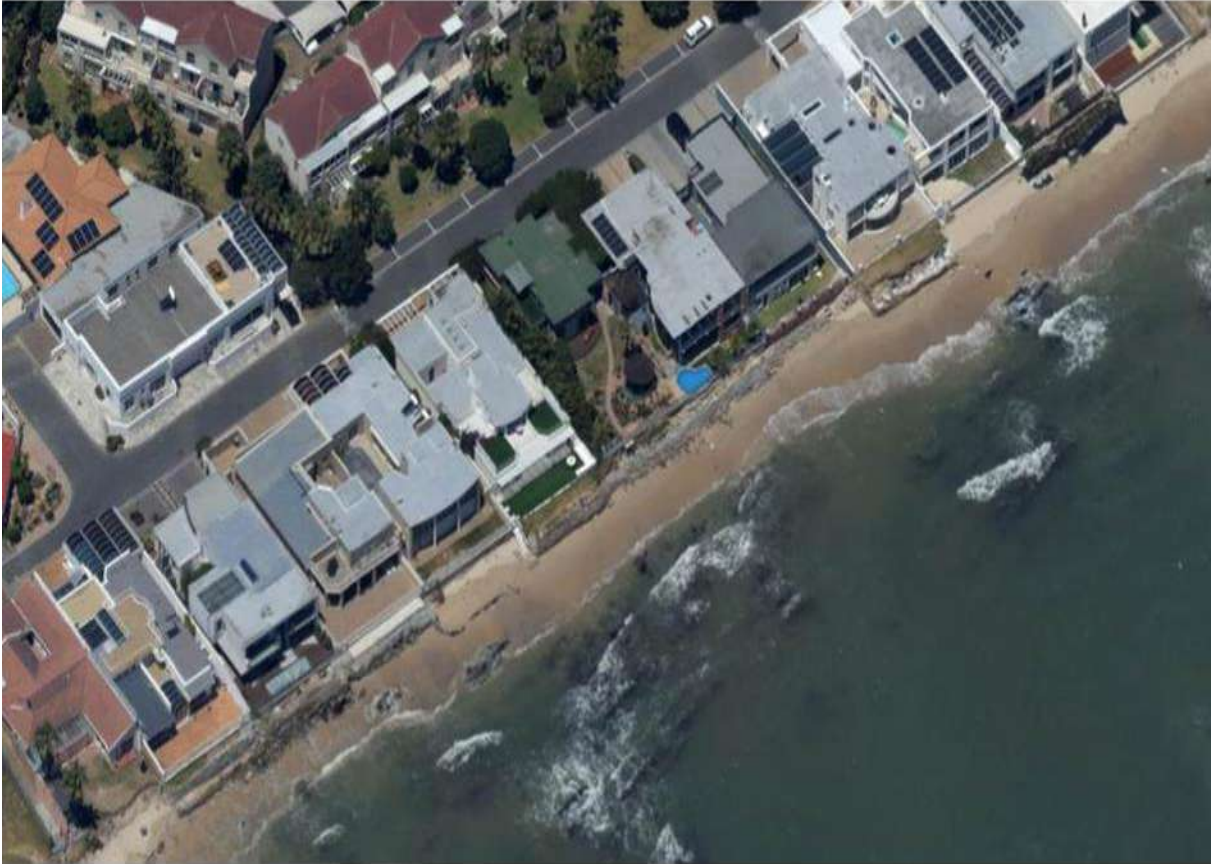
November 12, 2022







CITY OF CAPE TOWN  
ISIXEKO SASEKAPA  
STAD KAAPSTAD



**KELP**

---




COASTAL CLEANSING PROTOCOL  
FOR THE  
CITY OF CAPE TOWN JUNE 2025

Prepared by the Coastal Management Branch



# Fish Hoek

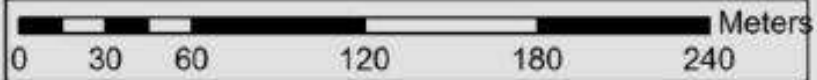
## Legend

 Kelp Collection Zone: 20 404 m. sq



CITY OF CAPE TOWN  
ISIXEKO SASEKAPA  
STAD KAAPSTAD

May 2015

 Meters  
0 30 60 120 180 240





CITY OF CAPE  
ISIXEKO SASEI  
STAD KAAPSTA

# POLLUTION MONITORING AND REPORTING

---

# Overview: Bacterial Sampling

---

- Glencairn to Miller's Point: 11 sites
  - 9 recreational nodes
  - 2 coastal monitoring points
- Mostly sampled weekly as of November 2024



# Overview

Site	Code	Category	Sampling frequency	Longitude	Latitude	Rolling 5-year Category	Total samples five years	Number of sample exceedences over five years	Percentage compliance over 5-year rolling period	Rolling 365-day Category (past 12 months)
Miller's Point Tidal Pool	CS37	Recreational Node	Bimonthly	18.476052	-34.231397	Excellent	38	0	100%	Excellent
Fishermans Beach	XCS12	Recreational Node	Bimonthly	18.45838889	-34.20596667	Excellent	105	3	97%	Good
Windmill Beach	CS36	Recreational Node	Bimonthly	18.45634199	-34.20104751	Sufficient	23	2	91%	Sufficient
Boulders Beach	XCS32	Recreational Node	Bimonthly	18.45221667	-34.19796667	Sufficient	92	6	93%	Sufficient
Seaforth Beach	XCS13	Recreational Node	Weekly	18.44663889	-34.19394444	Sufficient	181	15	92%	Good
Simons Town Long Beach	XCS14	Recreational Node	Weekly	18.42655556	-34.18741667	Sufficient	180	15	92%	Good
Glencairn Tidal Pool	CS38	Recreational Node	Weekly	18.432068	-34.162559	Good	45	0	100%	Good
Glencairn Beach	XCS15	Recreational Node	Weekly	18.43218333	-34.15981667	Excellent	122	0	100%	Excellent
Millers Point	XCS11	Coastal Monitoring Point	Bimonthly	18.471959	-34.229893	Excellent	105	2	98%	Excellent
Simons Town Harbour	XCS21	Coastal Monitoring Point	Monthly	18.432861	-34.192772	Good	90	1	99%	Poor
Simons Town Diving School	XCS22	Coastal Monitoring Point	Monthly	18.42901	-34.191781	Excellent	89	2	98%	Poor

# Simon's Town coastal monitoring points

We don't report health risk categories for monitoring points as they are generally not recreational and are generally located near potential sources of pollution for monitoring purposes. However, categories included below to illustrate an example.

Site	Code	Category	Sampling frequency	Longitude	Latitude	Rolling 5-year Category	Total samples five years	Number of sample exceedences over five years	Percentage compliance over 5-year rolling period	Rolling 365-day Category (past 12 months)
Simons Town Harbour	XCS21	Coastal Monitoring Point	Monthly	18.432861	-34.192772	Good	91	1	99%	Poor
Simons Town Diving School	XCS22	Coastal Monitoring Point	Monthly	18.42901	-34.191781	Excellent	90	2	98%	Poor

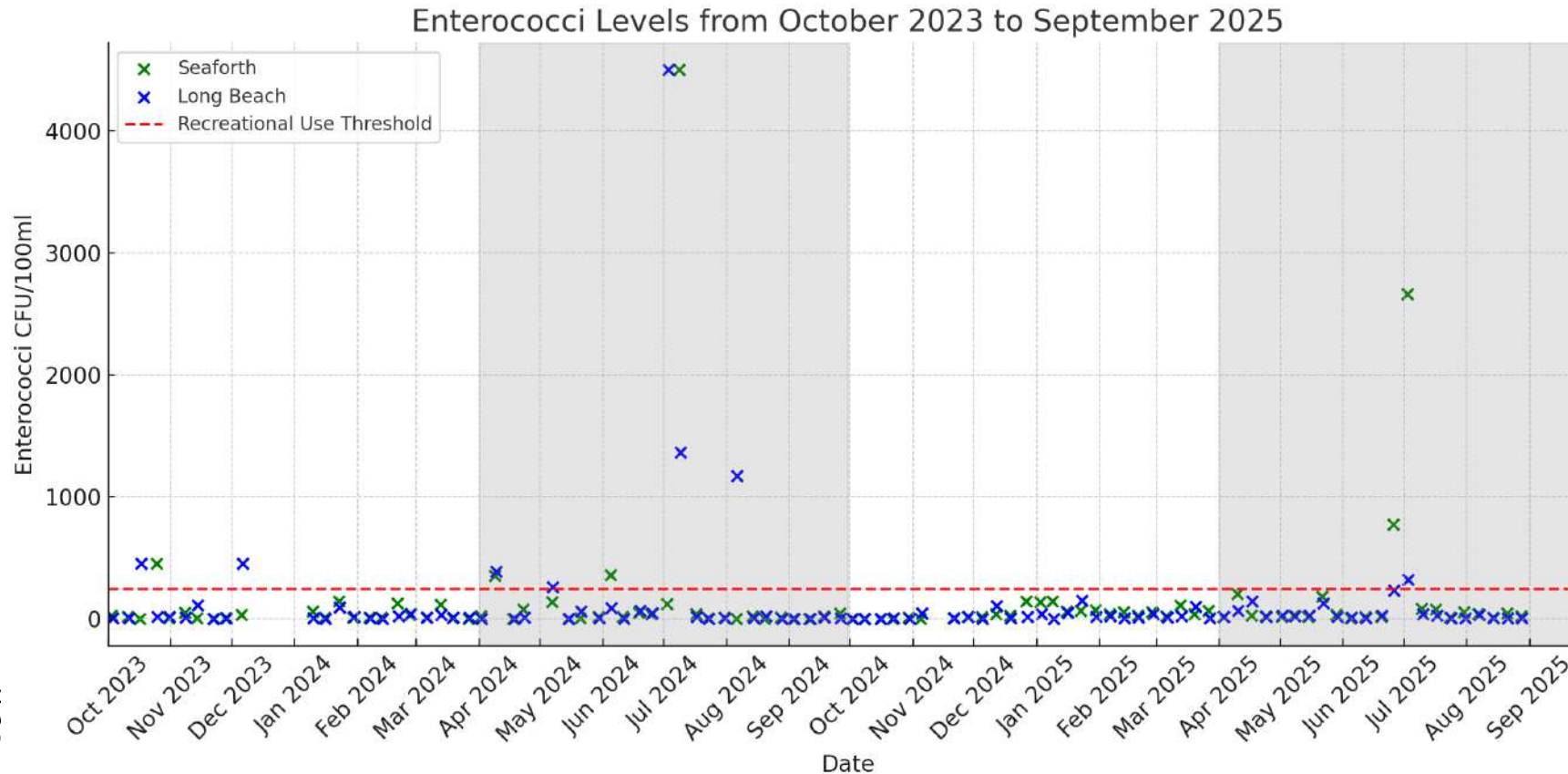
Code	Sample Date	Numeric Value
XCS21	8/28/2025	210
XCS21	7/31/2025	192
XCS21	7/3/2025	960
XCS21	6/5/2025	33
XCS21	5/8/2025	57
XCS21	4/10/2025	182
XCS21	3/13/2025	71
XCS21	2/13/2025	27
XCS21	1/16/2025	43
XCS21	12/19/2024	121
XCS21	11/21/2024	25

Code	Sample Date	Numeric Value
XCS22	8/28/2025	170
XCS22	7/31/2025	3
XCS22	7/3/2025	286
XCS22	6/5/2025	5
XCS22	5/8/2025	16
XCS22	4/10/2025	31
XCS22	3/13/2025	4
XCS22	2/13/2025	2
XCS22	1/16/2025	36
XCS22	12/19/2024	2
XCS22	11/21/2024	1

- Failed result on the 3 July 2025 causing both sites to go from almost 100% compliance to 98/99% compliance
- Because these sites are only monitored monthly, one failed result out of 12 will likely cause the categorisation to be "poor".

# More data: Long Beach and Seaforth

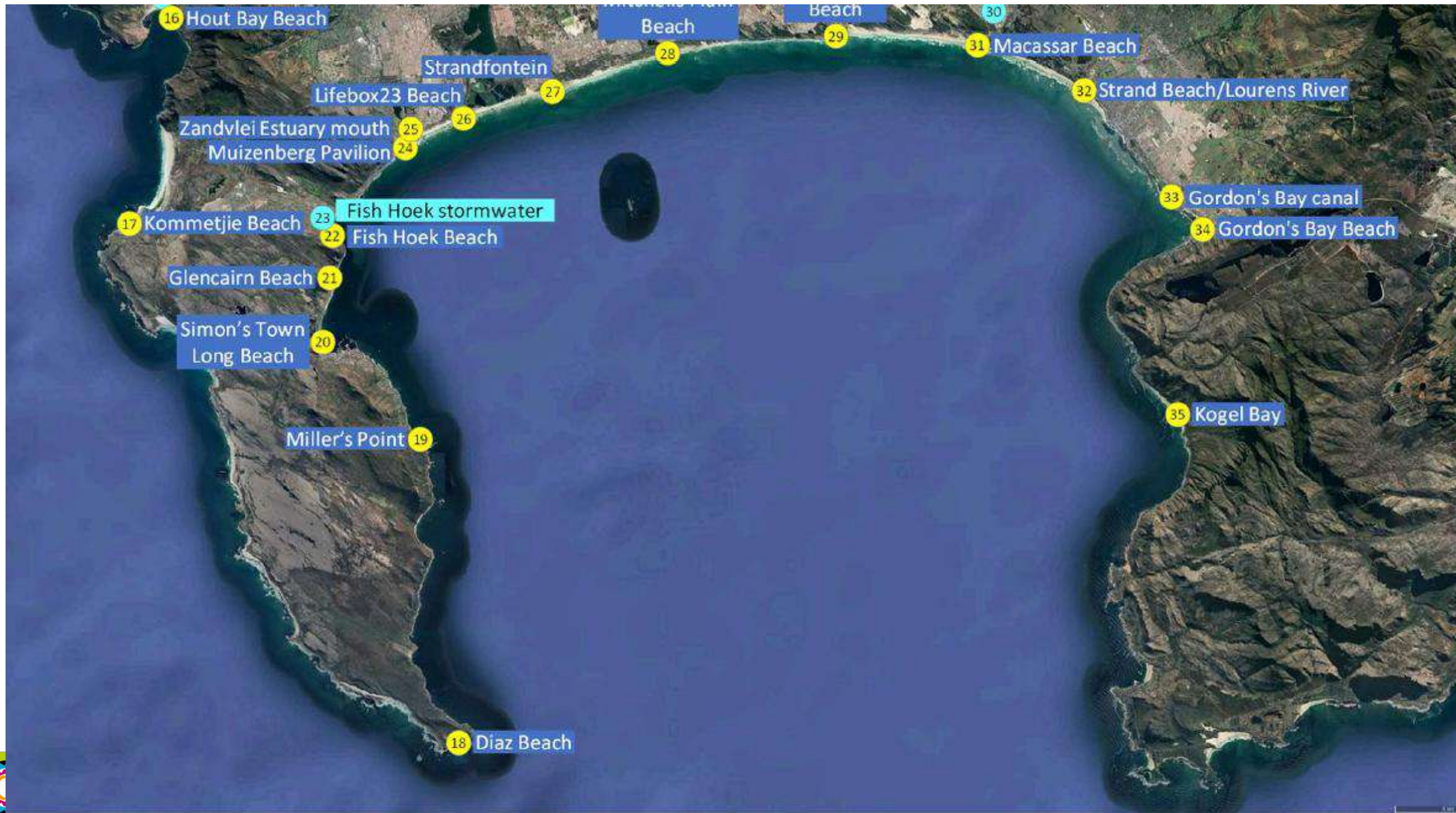
- More data, better confidence, greater understanding
- Failed results mostly in winter (greyed bars) – anecdotally linked to rainfall (we have not statistically compared yet)
- Summer 2023 failed results could have been a result of loadshedding – which had >6000 hours of loadshedding

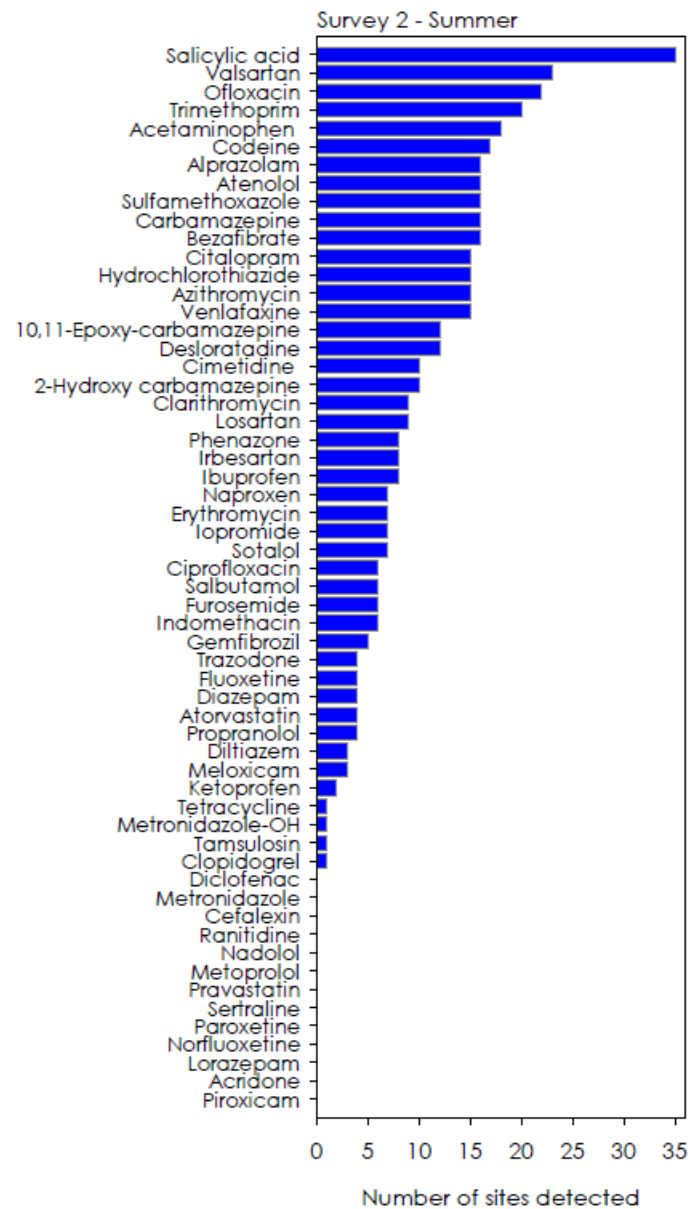
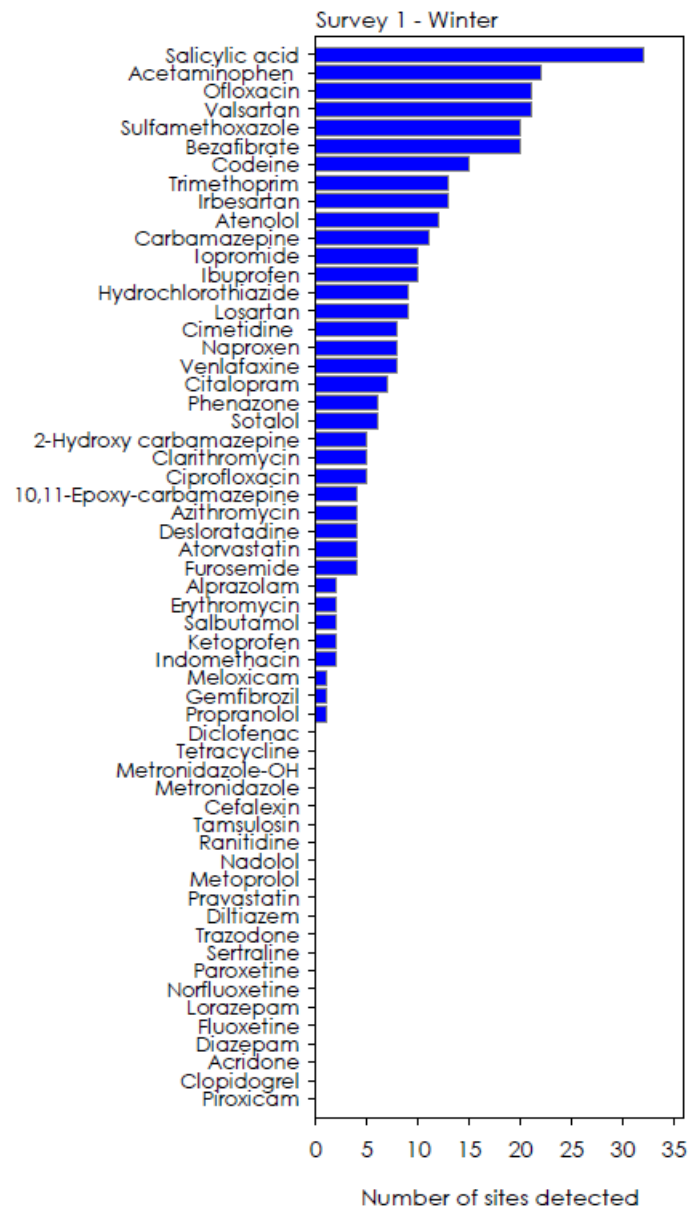


# Glencairn – Never Failed

Site	Code	Category	Sampling frequency	Longitude	Latitude	Rolling 5-year Category	Total samples five years	Number of sample exceedences over five years	Percentage compliance over 5-year rolling period	Rolling 365-day Category (past 12 months)
Glencairn Beach	XCS15	Recreational Node	Weekly	18.43218333	-34.15981667	Excellent	120	0	100%	Excellent

Out of all 107 coastal sites, Glencairn beach comes out of top in terms of lowest number of failures (zero) per number of samples over the last five years.







**Figure 5.** The number of pharmaceutical compounds found at a quantifiable concentration in water

# DUNE MANAGEMENT

---

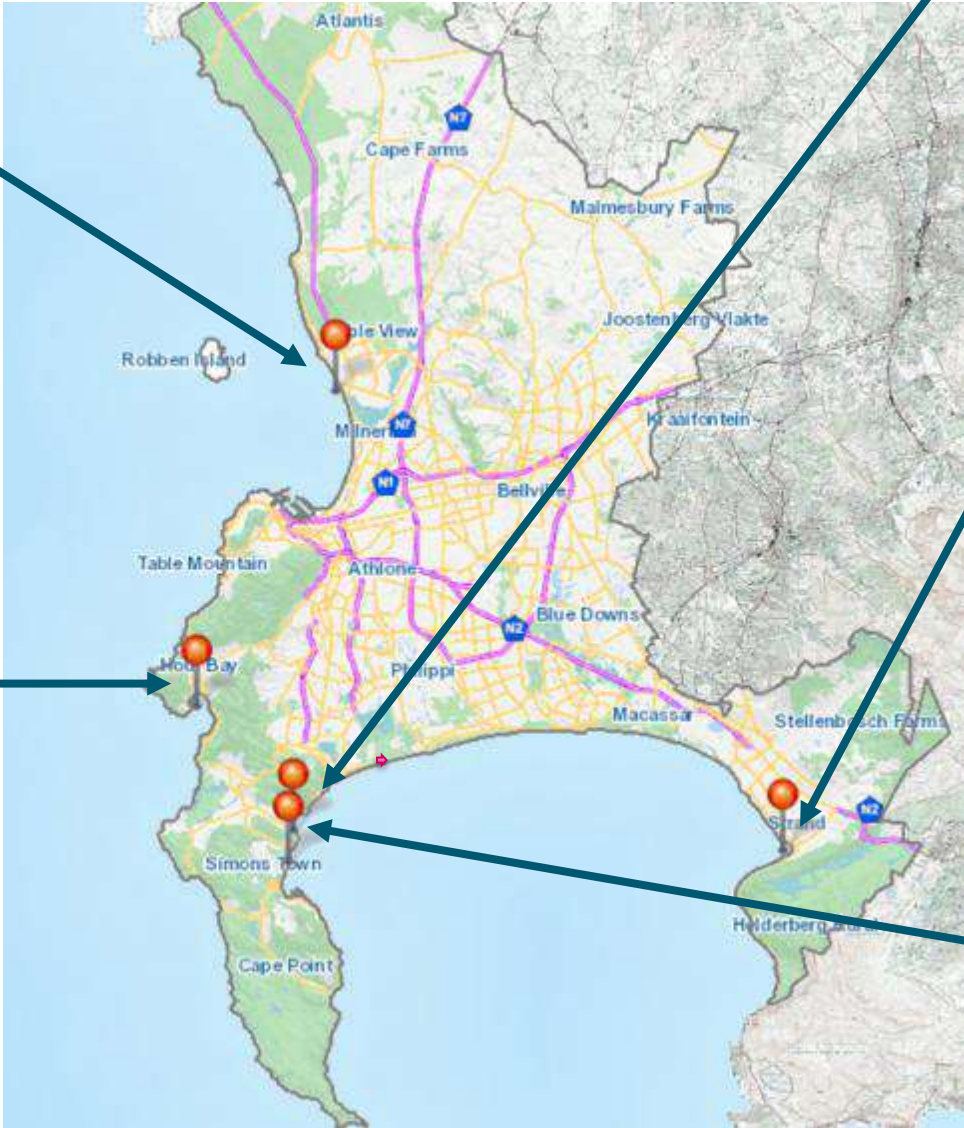


# DUNE REHABILITATION SITES (AS OF 2025)

Table View Dune Rehabilitation Area: 8 hectares



Hout Bay Dune Rehabilitation Area: 7 hectares



Fish Hoek Dune Rehabilitation Area: 4.5 hectares



Gordons Bay Dune Rehabilitation Area: 5 hectares



Glencairn Dune Rehabilitation Area: 0.5 hectares





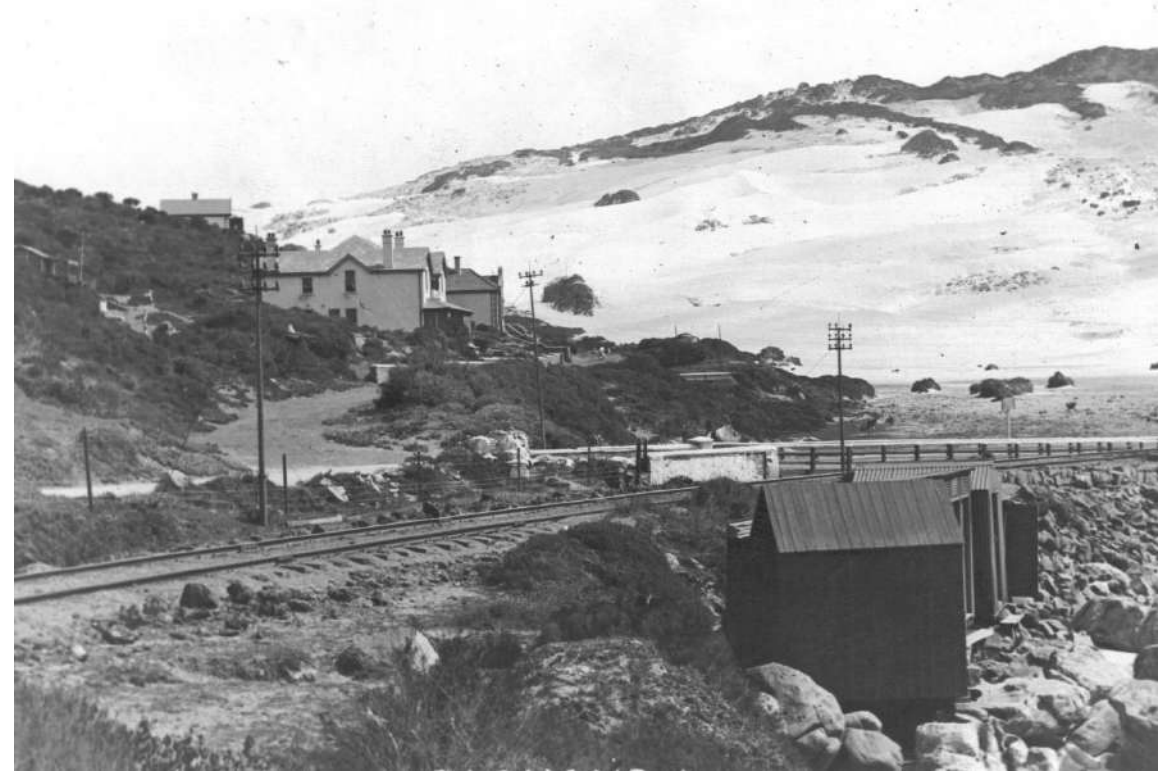


# Historical Situation

---



1914

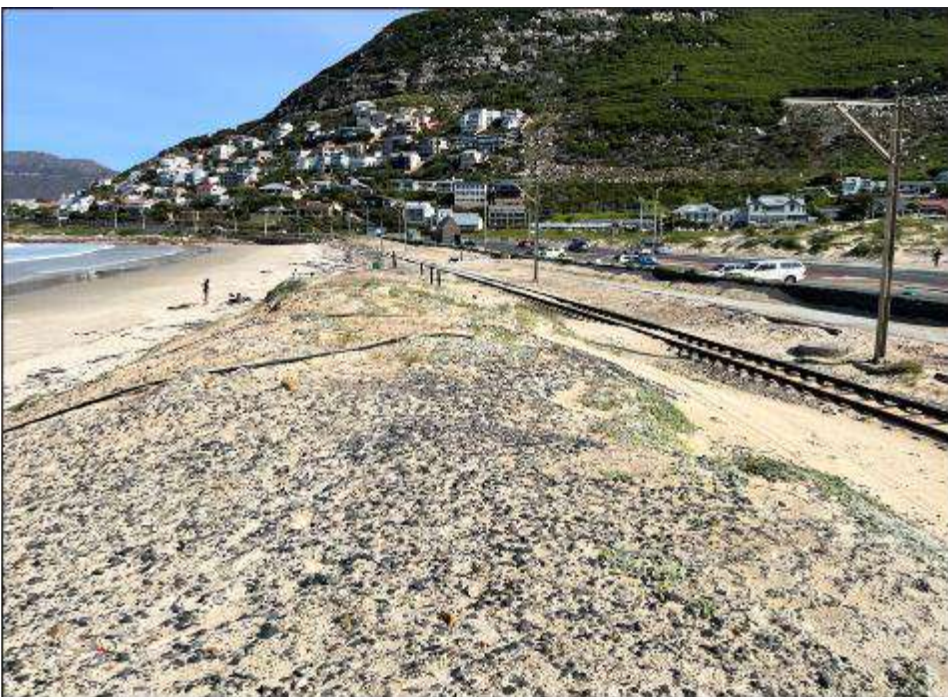


Unknown



## BEFORE

- The Glencairn dunes are part of a historic sand bypass system.
- Historical mismanagement resulted in significant blow outs and wind blown sand
- Resulting in significant inundation of the railway line rendering it in operable
- Poor Management during clearing railway line resulted in ballast on beach and dune
- Wind blown sand impacting adjacent residents, PRASA and Commuters
- Poor quality Coastal experience



## AFTER

- Railway line has remained clear of sand
- The community is backing the project given the success
- Annual earthworks are proving to not be required due to dynamic beach levels – reducing maintenance
- Vegetation coverage is 90%
- Improved Quality of Beach





## AFTER

- The biodiversity has improved and ecological function is returning
- Provides green linear link from coast to Silvermine river and adjacent protected areas.
- Railway line has remained clear of sand
- No inundation of back of beach areas by wind blown sand
- The community is backing the project given the success
- Annual earthworks are proving to not be required as frequently due to dynamic beach levels – reducing maintenance



# Coastal Signage

---



# Coastal signage (before and after example)

Before



After



# Bollard signs

---

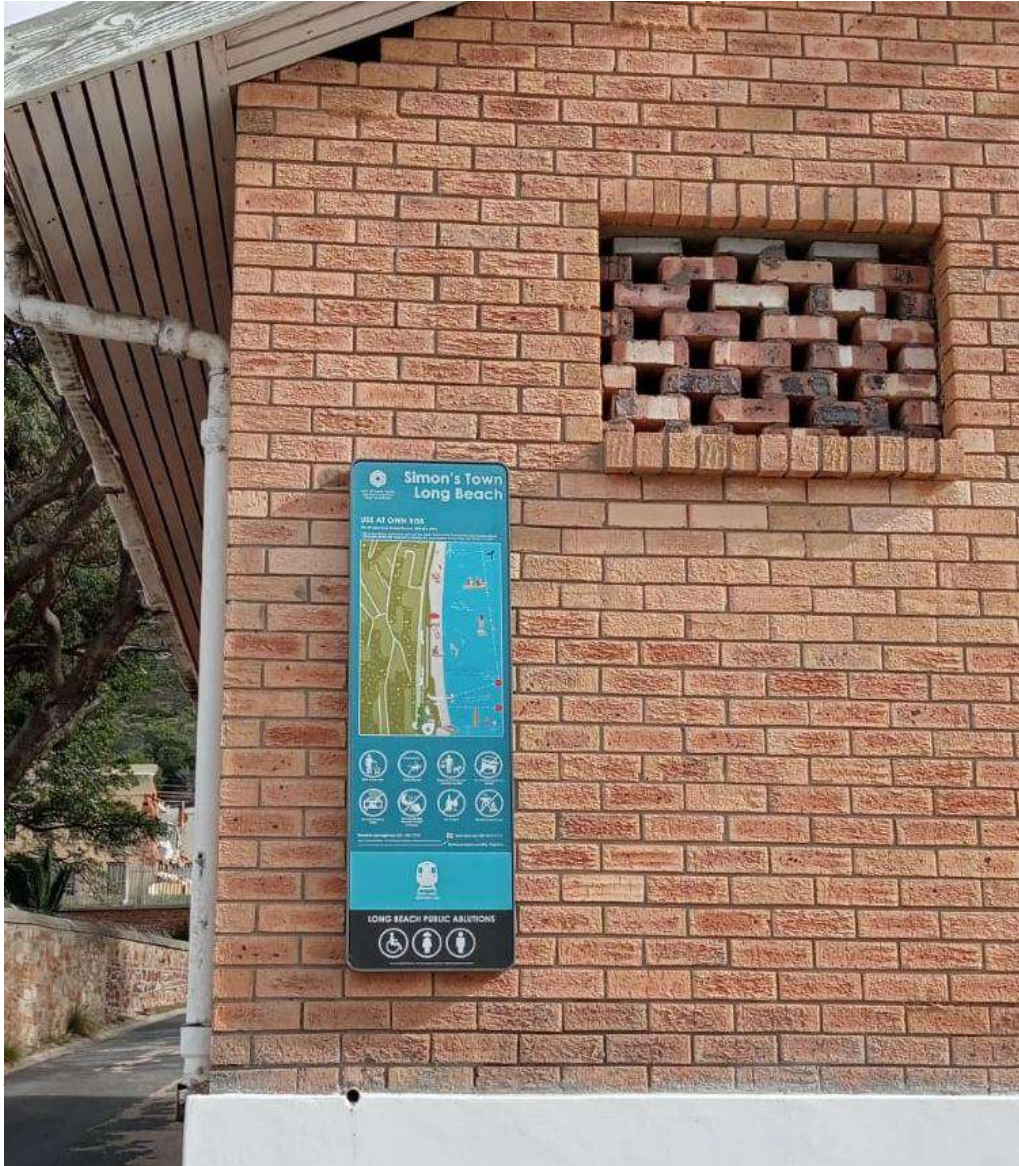
Before



After: visually unobtrusive

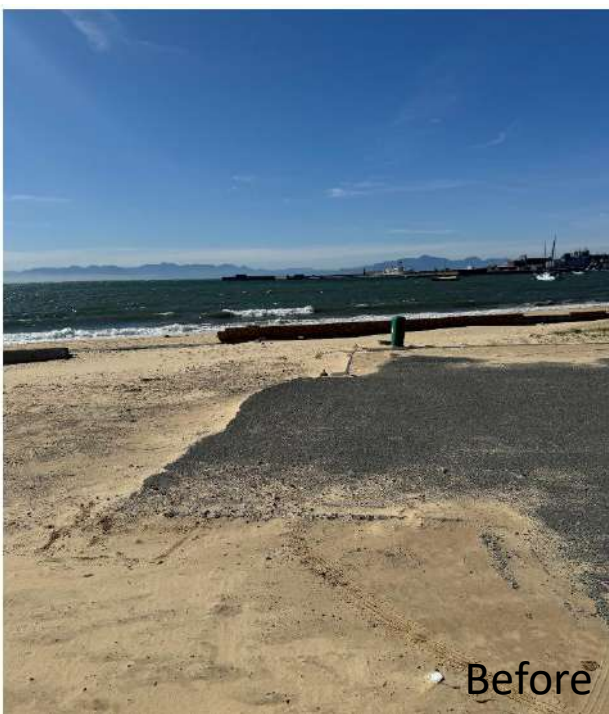


# Wall mounted signs



# INFRASTRUCTURE AND UPGRADES

---



Before



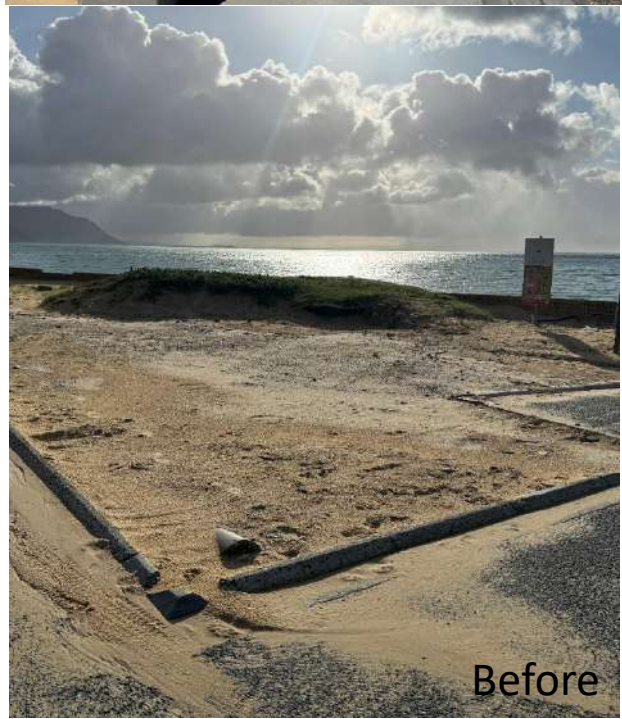
After



Before



After



Before



After



Before

**After**



Before



After



Before



After



# Simons Town Jetty

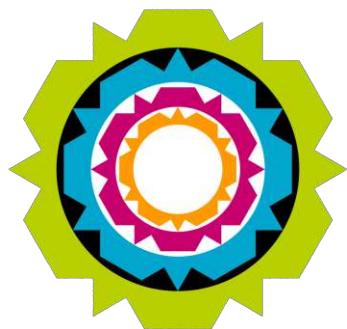






**Millers Point and Soetwater: Coastal  
Conservancies under Coastal Management as  
of 01 July 2025**





CITY OF CAPE TOWN  
ISIXEKO SASEKAPA  
STAD KAAPSTAD

**Thank You**

---

Making progress possible. Together.

What you do makes a difference, you must decide what  
difference you want to make Jane Goodall



In the beninging...







R A O U L C O S C F A



# Mission Statement:

Connecting people to the ocean through  
**Adventure, Science & Conservation**

*How can I create economic opportunities while still prioritizing ocean conservation and awareness...?*

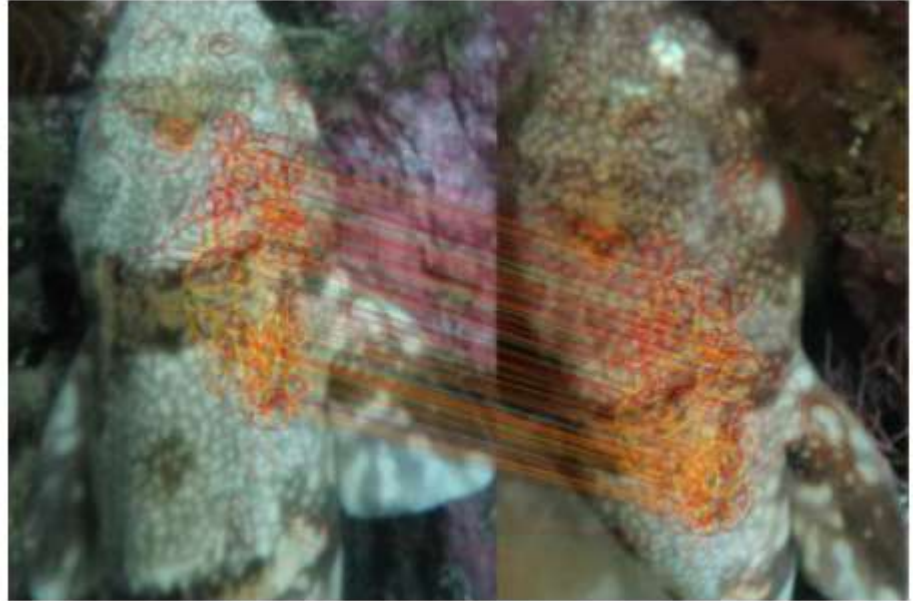


# Science Tourism & Citizen Science





+



# Recreational Diving with purpose





THE  
OCEAN HUB

TOP BANANA



Fostering Global Cooperation



REACHING OUT TO  
MASIPHUMELELE SCHOOL  
WITH



# Mini research symposium

Hosted by Cape RADD

Join us for an inspiring evening as the students of Reading University present their research projects, showcasing innovative approaches in marine and environmental science

When: 15 September @ 16h00  
Where: Simon's Town Museum



FALSE BAY  
YACHT CLUB  
34°11.541'S 18°26.047'E

## Diving Cleanup

Saturday 27 September @ 10h00



Collect a bag of trash during your dive and get a complimentary cup of Coffee, Tea or Hot Chocolate!



Arksen



Join us for a screening of

# OCEAN

WITH DAVID ATTENBOROUGH

Simon's Town, SA

## WORLD OCEANS DAY UNDERWATER & LAND CLEANUP



FBYC



IMPACT DIVERS

Celebrate World Marine Protected Areas Day and join us for a **FREE** guided snorkel session!

Experience our Marine Protected Area with our marine biologists and learn how we can make a difference and protect our oceans!

**SATURDAY 2 AUGUST 2025**

Limited spots available

Book at [info@caperadd.com](mailto:info@caperadd.com)



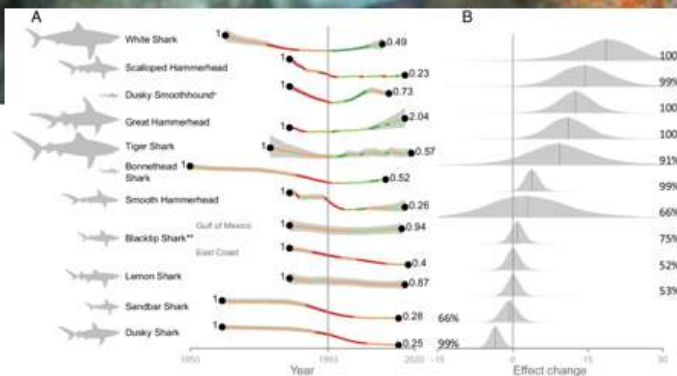
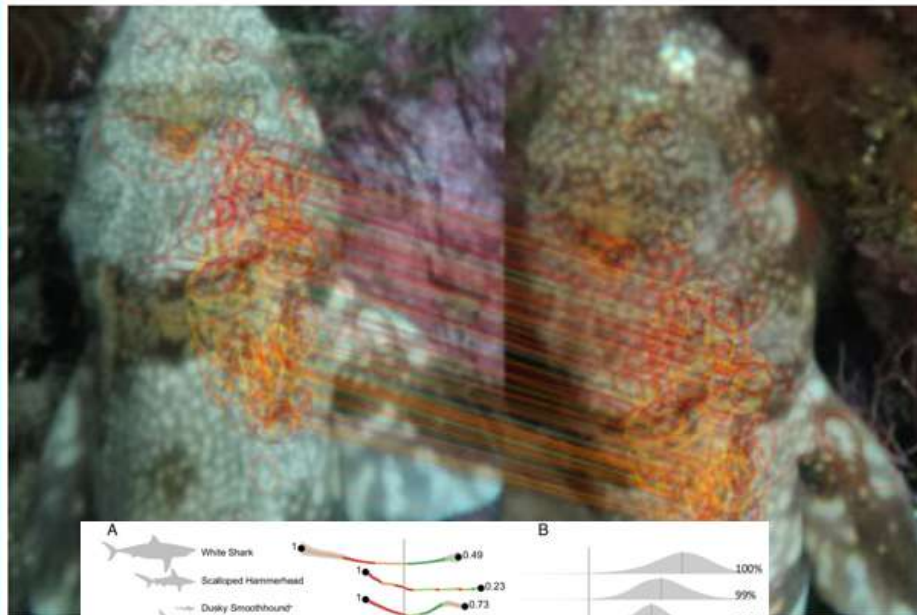
BYOG - Bring your own gear OR hire gear from Impact Divers

**R 350**  
5 mm hooded wet suit  
Mask  
Snorkel  
Fins

Terms and Conditions apply



# But what is the Impact? (Shark Populations)



## What is the Impact? - Ocean Literacy & Education



# What is the Impact? - Social Impact





Journal of Outdoor Recreation and Tourism

Volume 49, March 2025, 100849



Research Article

## Impacts of participation in scientific activities on marine tourists' engagement and individual learning outcomes

Serena Lucrezi<sup>a</sup>  , Mike Barron<sup>b</sup>, Antonietta d'Agnessa<sup>a</sup>



# Social Science & Scientific Tourism

SCIENTIFIC TOURISM IS A TYPE OF TOURISM THAT PUTS TOGETHER TOURISM AND SCIENCE (E.G. DATA COLLECTION)

SCIENTIFIC TOURISM CAN HELP PEOPLE BETTER CONNECT WITH NATURE, LEARN, CHANGE THEIR BEHAVIOUR, AND EXPLORE CAREER OPPORTUNITIES

SOCIAL SCIENTISTS COME IN TO ENSURE THAT THESE BENEFITS ARE REAL, AND NOT JUST SPECULATION

HOW? EXPLORATORY AND EXPERIMENTAL RESEARCH. HERE I WILL GIVE YOU AN EXAMPLE BASED ON WORK WE DID AT CAPE RADD



# What Was Discovered?



## Divers

No Effect



## Citizen Science

Positive Effect  
on Attitude &  
Individual Learning  
Outcomes

# What Does This Mean?

ACTIVITIES AT CAPE RADD HAVE A POSITIVE EFFECT ON TOURISTS, STRONGER THAN REGULAR TOURISM ACTIVITIES

REFLECTIVE ENGAGEMENT MEANS THAT TOURISTS FEEL STRONGER EMOTIONS TOWARDS THE ENVIRONMENT AND WANT TO SHARE THEM WITH OTHERS

INDIVIDUAL LEARNING OUTCOMES FROM PARTICIPATING IN CITIZEN SCIENCE ARE ENHANCED, THAT IS, TOURISTS APPRECIATE SCIENCE AND ACQUIRE MORE KNOWLEDGE

TOURISTS WANT TO ENGAGE IN PRO-ENVIRONMENTAL BEHAVIOUR AFTER PARTICIPATING IN CITIZEN SCIENCE



# What's The Way Forward?

SCIENTIFIC TOURISM SHOULD SEEK NEW WAYS TO ENGAGE PEOPLE, EXPAND THE POOL OF ACTIVITIES AND THEIR CHARACTERISTICS

COMPANIES SHOULD EXPLORE MORE PRODUCTS AND ACTIVITIES THAT CAN BE OFFERED

CURRENT ACTIVITIES CAN STILL IMPROVE TO ENSURE THAT MORE BENEFITS EMERGE FROM PARTICIPATION

CITIZEN SCIENCE NEEDS TO BE VALIDATED, LEGITIMISATION THROUGH PEER REVIEW AND SCIENTIFIC PUBLICATIONS



# Thoughts on the future



VS



# What role can You play?

- Join or Promote programs with community / conservation purpose Support local **fisheries, marinas, and tour operators** in adopting sustainable practices / share clientele
- Organize or sponsor **community beach clean-ups** / Collaboration with Local Stakeholders
- Sponsor a school marine workshop / educational experiences
- Share social media campaigns highlighting **ocean conservation, local awareness, support of conservation**
- Develop **joint campaigns** with other businesses to amplify awareness and reach wider audiences.
- Incentivize Sustainable Behavior / Ocean literacy in your business
- *Waste Management & Reducing Single-Use Plastics*

## Closing Reflections

Our mission: Connecting people to the ocean through Adventure, Science & Conservation

A platform for Impact on both the Scientific and community level

There are many big challenges which seem overwhelming

**BUT** Our little case study shows small passionate communities & Impact-driven business can make a difference

**SCALE** is the multiplier of Impact

What you do makes a difference, you must decide what  
difference you want to make The late Jane Goodall



Thank you